



FRONT VIEW OF CG ELITE 12 DISPLAY

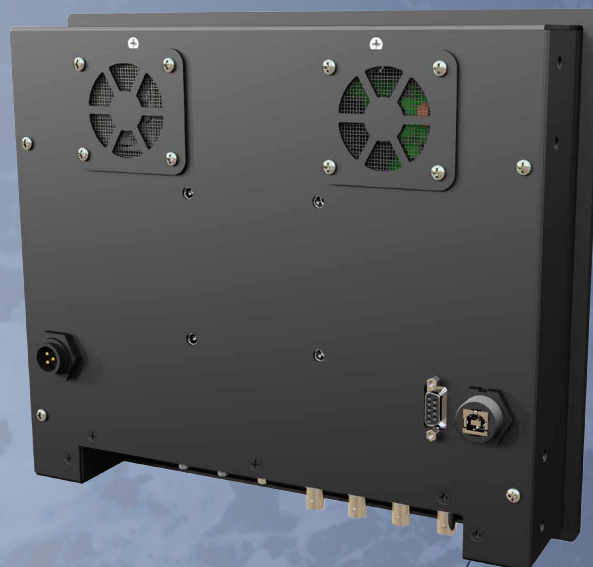
## ▶ CG ELITE DISPLAYS

Seeing is believing with MarineNav's true marine grade quality, **sunlight readable displays**. All MarineNav displays come with **dedicated backlit front controls** that are easy to see and use, and our **one-touch red monochrome night mode** is ideal for low light conditions. You won't miss out on any action with the **picture-in-picture display**.

The CG Elite features **resistive touchscreen technology** that will allow you to use it even with gloves on. The CG Elite marine display features standard marine grade aluminum construction and comes with a two year warranty (2nd year with product registration). **Available with optional integrated computer** (15" and 19" models only).

## ▶ FEATURES

- *Red monochrome night-mode*
- *Full sunlight readability*
- *Picture-in-picture*
- *Multiple Video Inputs*
- *Backlit front controls*
- *TFT Active Matrix Panel, LED backlight*



BACK VIEW OF CG ELITE 12 DISPLAY

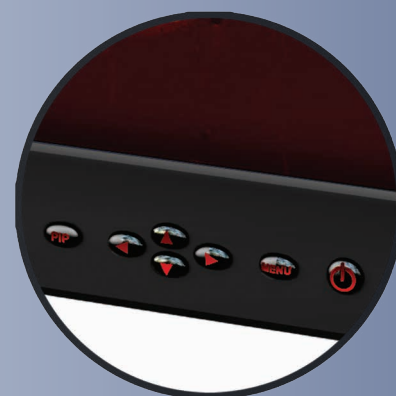
## ► CG ELITE 12 DISPLAY SPECIFICATIONS

Features	CGE-12
LCD Display	12.1" TFT Active Matrix Panel, LED backlight
Integrated Computer	Not available
Brightness	1200 nit, upgradeable
Contrast	1000:1
Resolution	1024 x 768 native
Optimized Multi-Resolution	Up to 1920 x 1200 supported with scaling
View Angle	160(H), 160(V)
Display Colours	262K
Operating Temperature	-10°C to 55°C (14°F to 131°F)
Picture in Picture	Yes
Video Inputs	2 VGA, 2 HDMI/optional DVI, 4 Composite
Other Inputs	Power, USB, Serial/Network
Input Power	9~30V DC input
Power Consumption	35~40 watts
Dimming	Wide dimming range to black
Front Window	Optical bonded anti-reflective, anti-glare
Bezel & Rear Case	Marine grade aluminum, marine grade powder coat (internal and external)
Enclosure	IP65 from front (optional IP65 from rear)
Touchscreen	Resistive, polarized; usable with gloved hand
Backlit Front Controls	Yes, with one-touch hotkeys
Bezel Dimensions	312 mm x 262 mm (12.28" x 10.31")
Chassis Dimensions	294 mm x 244 mm (11.57" x 9.60")
Install Depth	63 mm (2.48")
Installation Options	Console flush mount, VESA 75
FCC, CE Approved	Yes
Warranty	2 year (2nd year with registration*)

\* Product must be registered within first warranty year.



*Red Monochrome Night Mode View*



*Backlit Front Controls*

*MarineNav products are available in a multitude of configurations to provide maximum flexibility and user convenience. Contact us or visit our website at [www.marinenav.ca](http://www.marinenav.ca) for more details.*

While we strive to ensure the accuracy of all items and descriptions in this document, this is not always possible. Specifications, options, and availability subject to change without notice. Errors and omissions excepted. We reserve the right to limit quantities.

**MARINE NAV**

ISO 9001:2008 certified company

1466 Panmure Island Wharf, Montague, PE, CANADA C0A 1R0 +1 (902) 838-7011 • [info@marinenav.ca](mailto:info@marinenav.ca) • [www.marinenav.ca](http://www.marinenav.ca)