



FRONT VIEW OF MAR-21 DISPLAY

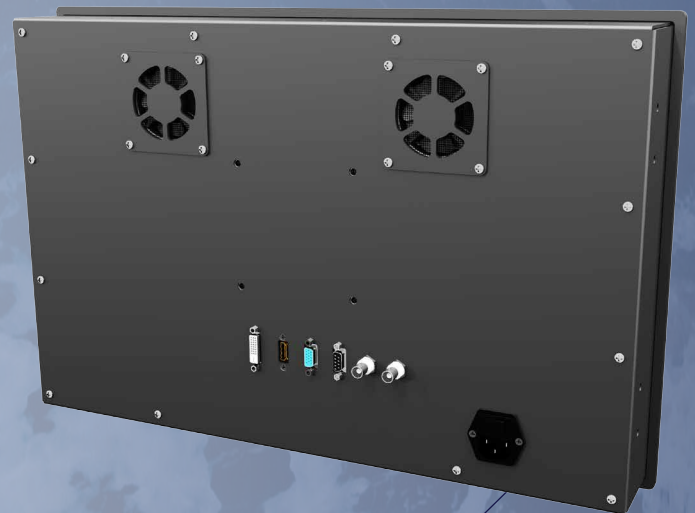
▶ MARINER SERIES

MarineNav Ltd. has developed its cost-effective Mariner Series marine displays specifically for commercial vessels requiring dedicated single-input marine grade displays. Ideal for use with Engine Management, Advanced Vessel Monitoring, and radar systems, our Mariner displays feature 300-400 nits brightness and dedicated backlit front controls. All of MarineNav's displays are constructed from marine grade aluminum and come with a two year warranty (2nd year with product registration).

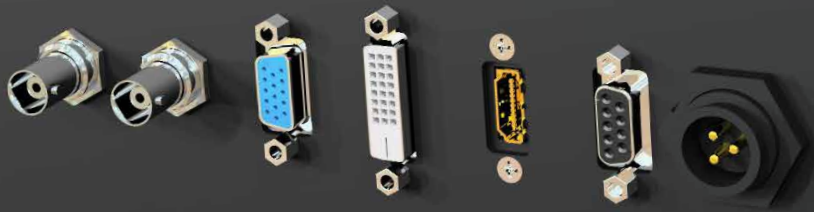
Mariner Series displays are available in 15", 19", 21.5", and 24" sizes and offer a number of options including enhanced brightness, front and/or rear IP 65 water-resistance, and composite inputs.

▶ FEATURES

- *Optional IP65 water-resistance front and/or rear*
- *Backlit front controls*
- *VGA and HDMI/DVI input, optional composite*
- *Console flush or VESA mounting options*
- *Two year warranty (2nd year with product registration*)*
- *Available in AC or DC*



BACK VIEW OF MAR-21 DISPLAY



► MARINER 21 SPECIFICATIONS

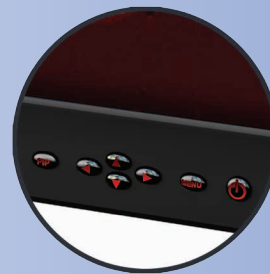
Features	MAR-21
LCD Display	21.5" TFT Active Matrix Panel, LED backlight
Brightness	300 nits
Contrast	1000:1
Aspect Ratio	16:9
Resolution	1920 x 1080 native
Optimized Multi-Resolution	Up to 1920 x 1200 supported with scaling
View Angle	170(H), 170(V)
Display Colours	16.7 Million
Operating Temperature	-10°C to 55°C (14°F to 131°F)
Video Inputs	VGA, HDMI/DVI, optional composite
Input Power	9~30V DC or 100~240V AC
Dimming	Wide dimming range to black
Front Window	Optional optical bonded anti-reflective/anti-glare
Bezel & Rear Case	Marine grade aluminum, marine grade powder coat (internal and external)
Enclosure	Optional IP65 from front and/or rear
Bezel Dimensions	553 mm x 365 mm (21.77" x 14.37")
Chassis Dimensions	537 mm x 350 mm (21.14" x 13.78")
Install Depth	73 mm (2.87")
Installation Options	Console flush mount, VESA 100
FCC, CE Approved	Yes
Warranty	2 year (2nd year with registration*)

* Product must be registered within first warranty year.



**Red Monochrome Night Mode View
(24" Monitor)**

MarineNav products are available in a multitude of configurations to provide maximum flexibility and user convenience. Contact us or visit our website at www.marinenav.ca for more details.



Backlit Front Controls

While we strive to ensure the accuracy of all items and descriptions in this document, this is not always possible. Specifications, options, and availability subject to change without notice. Errors and omissions excepted. We reserve the right to limit quantities.

MARINENAV

ISO 9001:2008 certified company

1466 Panmure Island Wharf, Montague, PE, CANADA C0A 1R0 +1 (902) 838-7011 • info@marinenav.ca • www.marinenav.ca